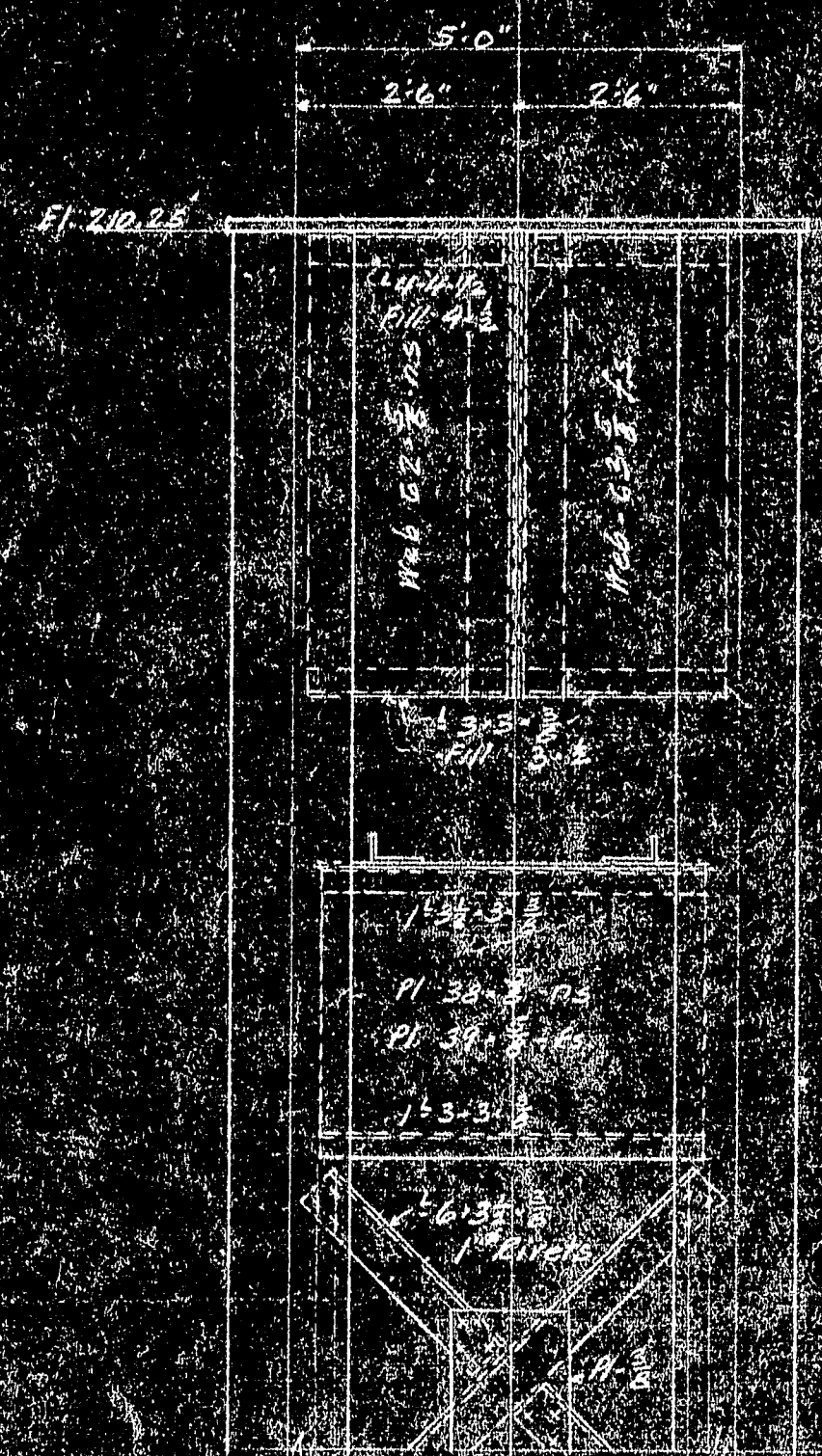


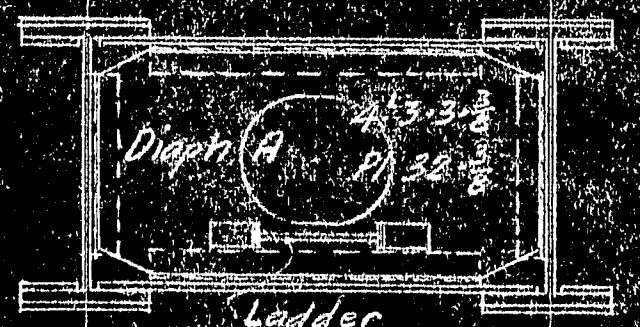
BASE
 WING PLG. 72 \times 8 \times 10'-0"
 BASE W. 8 \times 8 \times 7'
 STRUT W. 7 \times 4 \times 7'
 SLAB 88 \times 3 \times 10'-2"
 10 ANCHORS PER COL. 3" \times 11"
 12 \times 12 \times 1 ANCHOR PLG.
 C-6 \times 1/2 WASHER

SCALE 1" = 1'-0"

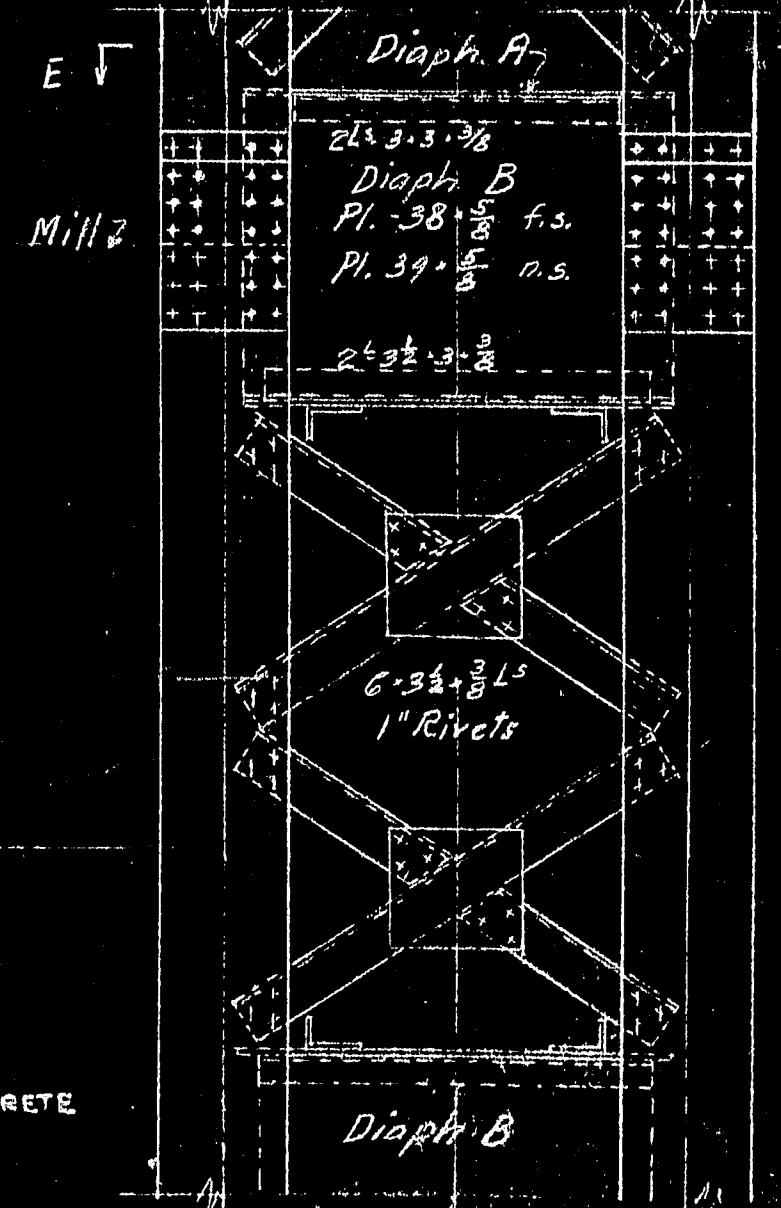
DIAPH.
 FILL BASE
 WITH CONCRETE



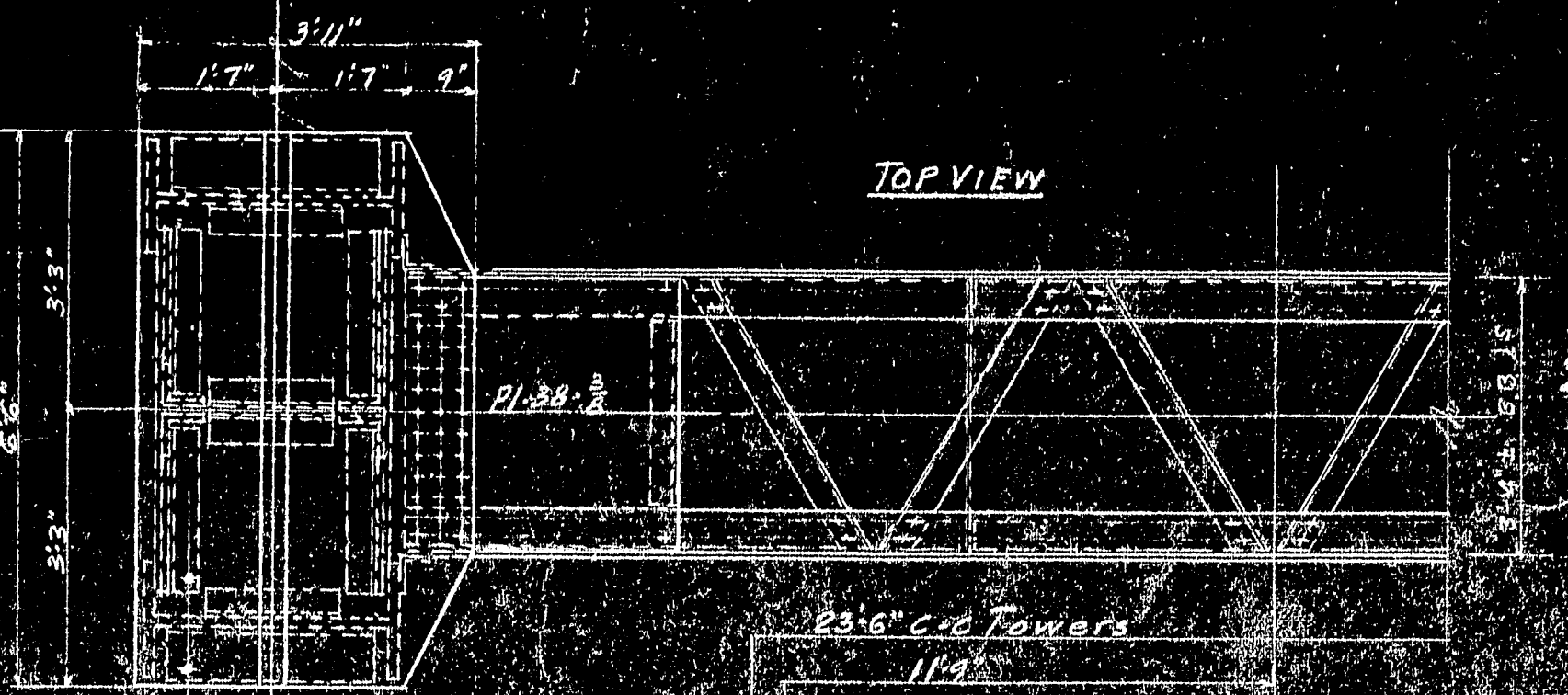
VIEW D-D



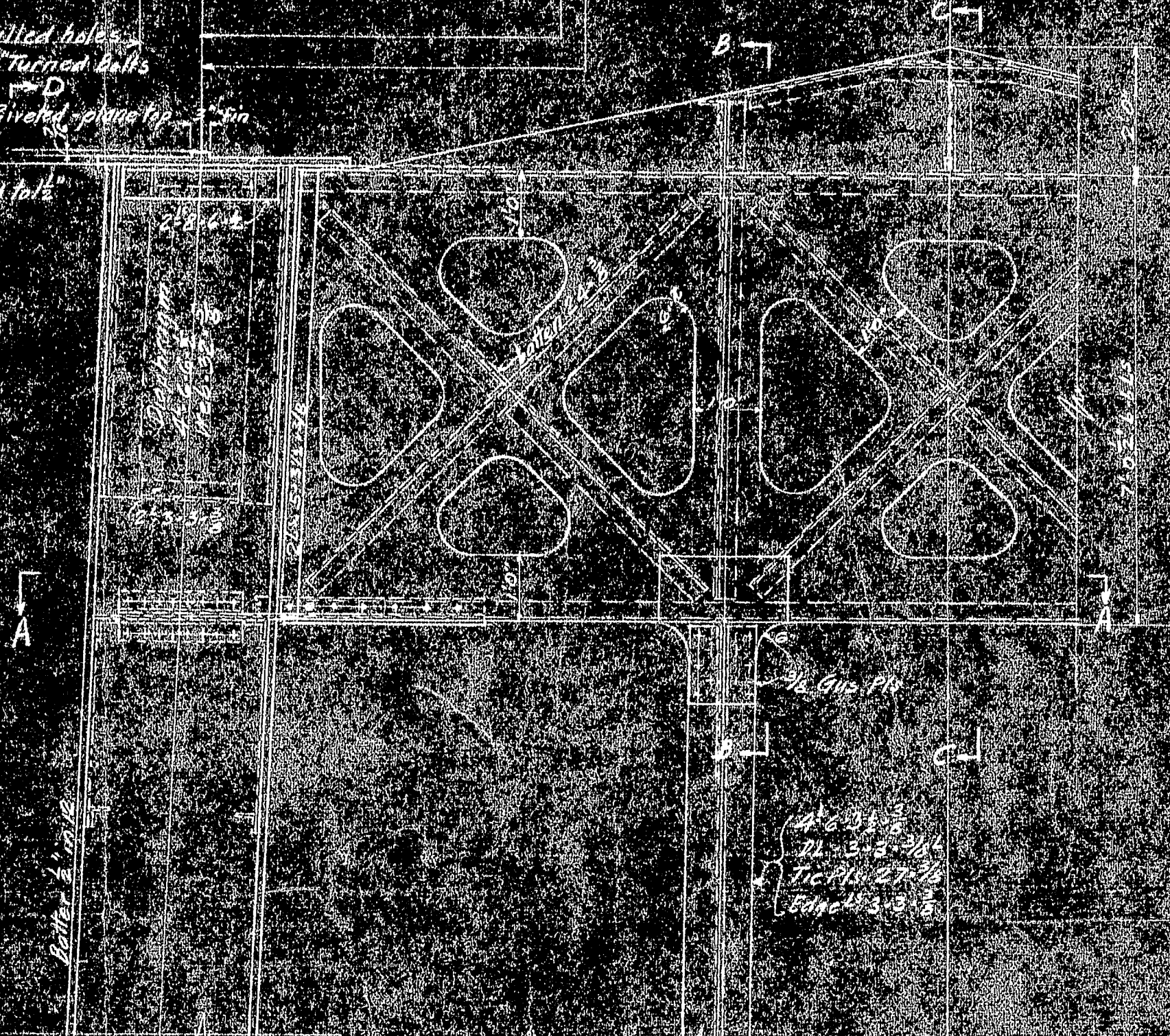
SECTION E-E



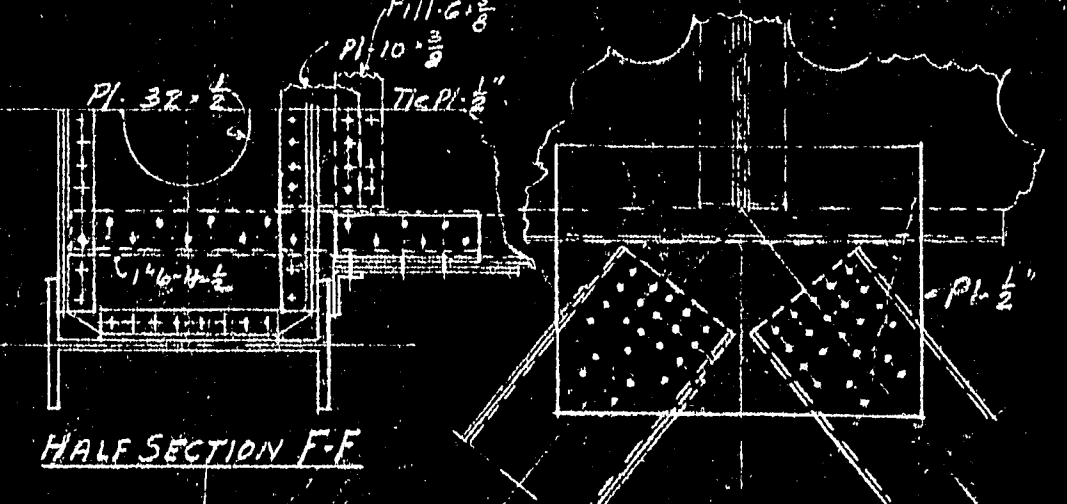
Typical Splice
 2 PLs 16" \times 1/2"
 2 PLs 16" \times 1/2"
 2 PLs 16" \times 1/2"
 Rivets 1"



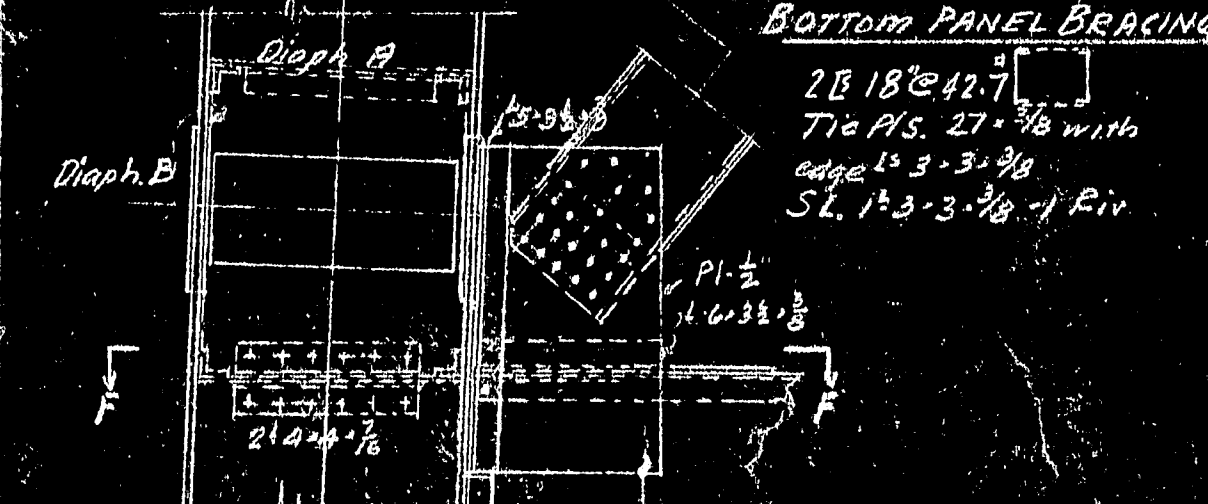
TOP VIEW



SECTION A-A
 TYPICAL CONNECTION



HALF SECTION F-F



All Struts
 2" \times 38" \times 1/2"
 2 Webs
 Diagonals 1" \times 3" \times 98"
 SL. 1" \times 3" \times 98"

HALF SECTION G-G

HALF SECTION H-H

HALF SECTION I-I

HALF SECTION J-J

HALF SECTION K-K

HALF SECTION L-L

HALF SECTION M-M

HALF SECTION N-N

HALF SECTION O-O

HALF SECTION P-P

HALF SECTION Q-Q

HALF SECTION R-R

HALF SECTION S-S

REVISIONS
1-7-38 Tower splice at Rdway level.
Lower bottom tower strut and change section of Diagonal Bracing
1-14-38 Addition of Sect G-G

SUPERSTRUCTURE
 P.W.A. PROJECT NO. ME 1010D
 DEER ISLE SEDGWICK BRIDGE DISTRICT
 BRIDGE OVER EGGMOGGIN REACH
 FROM LITTLE DEER ISLE TO SEDGWICK
 HANCOCK COUNTY, MAINE

MAIN TOWERS
 ROBINSON AND STEINMAN
 ENGINEERS
 NEW YORK CITY
 SCALES AS NOTED
 DRAWING NUMBER
 RS 3310-S103
 SEPTEMBER 4, 1937

